

# Integra® Jarit®

3-Piece Modular  
Laparoscopic Instruments

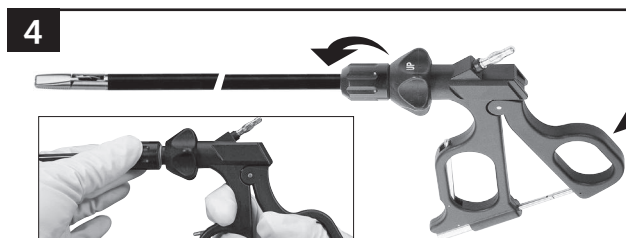
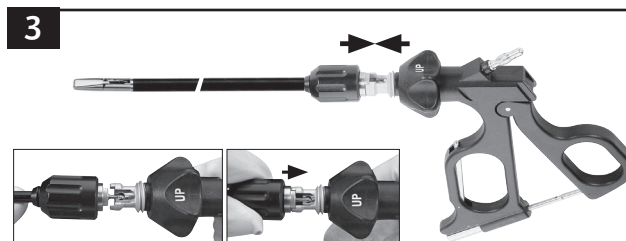
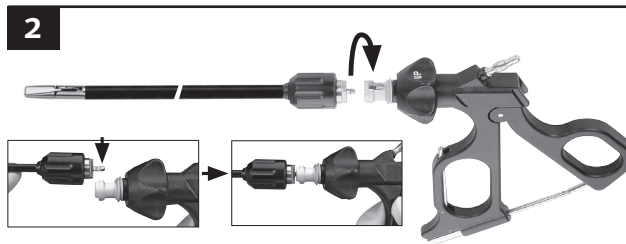
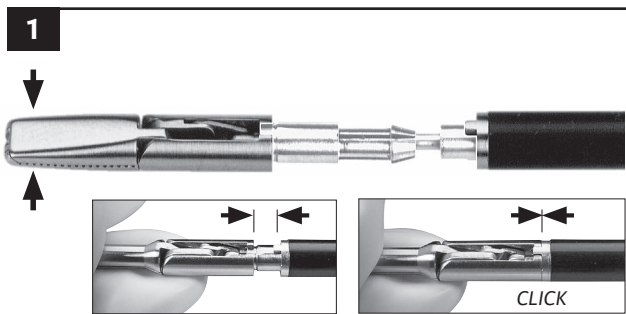


INTEGRA®  
LIMIT UNCERTAINTY



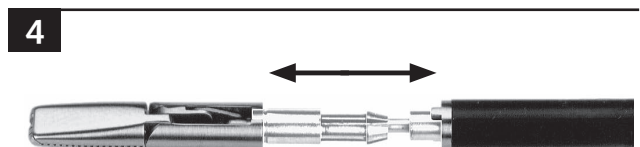
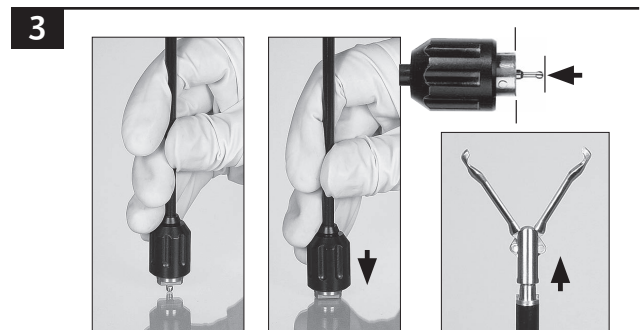
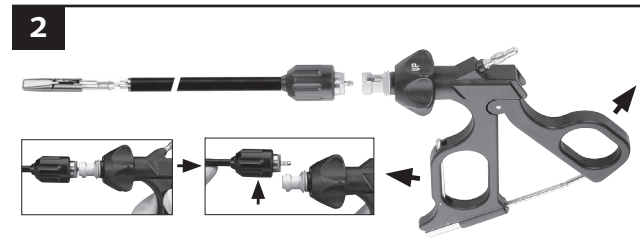
**Assembly**

- Ensure that the working part is closed. The nose of the tubular shaft and the notches on the insert must be on top of each other. The working end must audibly engage into the tubular shaft.
- Open the grip completely. Connect the ball retainer of the working part into the coupling of the grip.
- Close the grip completely.
- Tighten the union nut by hand.



**Disassembly**

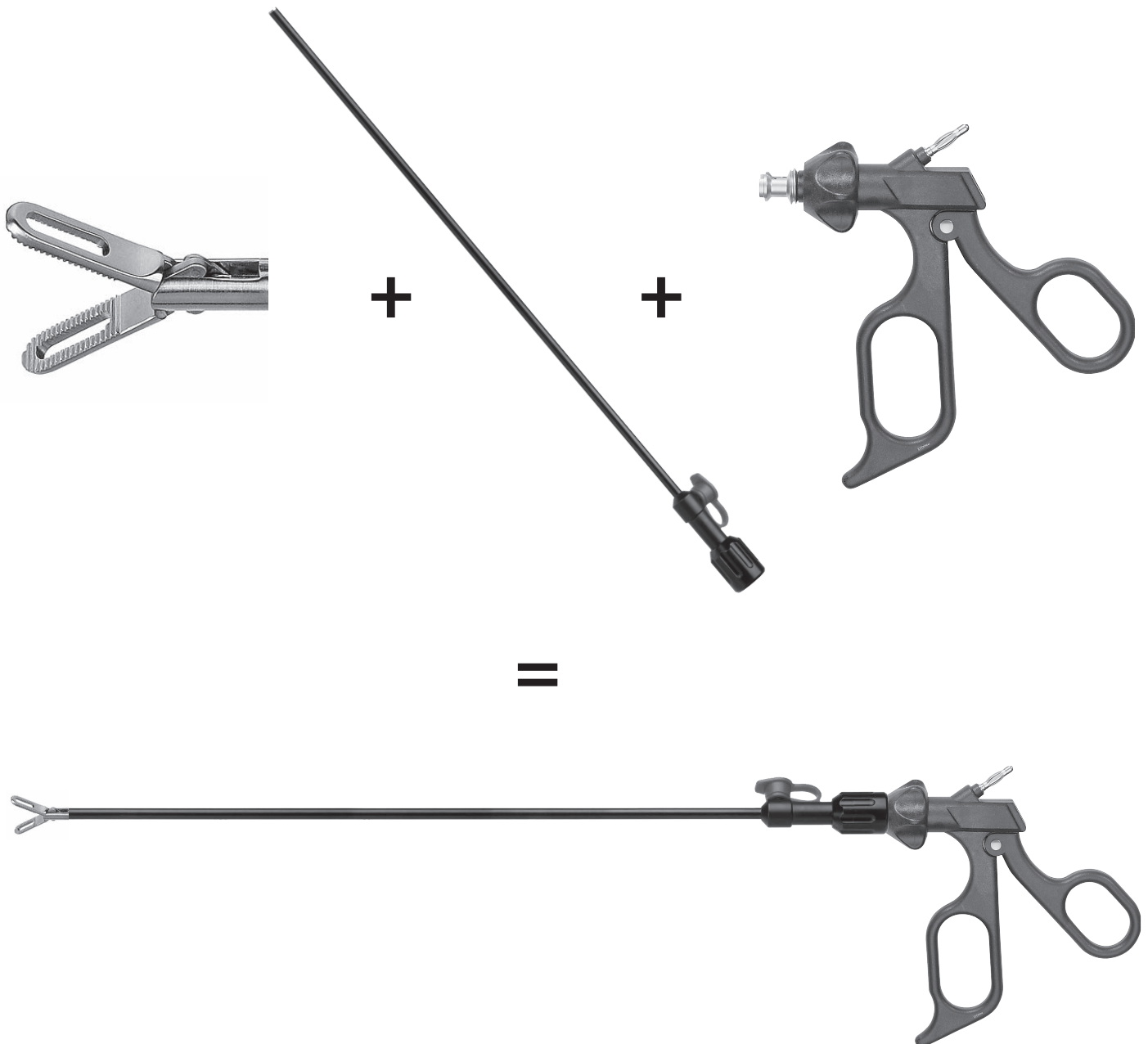
- Loosen the union nut.
- Open the grip completely. Disconnect the working part.
- Release the working end from the tubular shaft by pressing the ball retainer towards the working end.
- Remove the working insert completely from the tubular shaft.



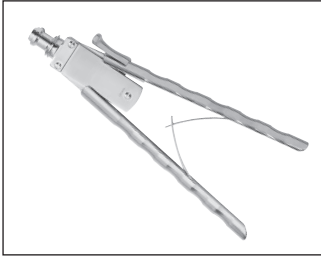
## Integra® Jarit® 3-Piece Modular

The Integra 3-Piece Modular Laparoscopic instrument consists of a handle and shaft, with an extensive variety of tip inserts to suit complex minimally invasive procedures. Instruments completely disassemble for effective cleaning and decontamination by sterile processing staff. Only four steps to complete disassembly, with flush ports for maximum access during cleaning. Long term cost savings may be realized when only worn components are replaced as necessary compared to requisitioning a new full instrument.

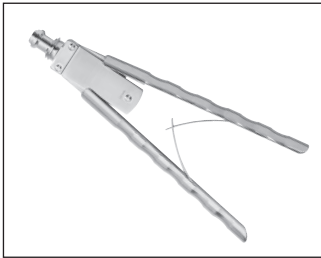
Integra's 3-Piece Modular Laparoscopic instrument line is available in 330mm, 360mm and 450mm lengths to suit patients of all sizes. Shaft and insert will accommodate up to 6 different handles styles; with and without ratchet mechanisms, and with and without rotation. Pistol grip or axial handle styles available. When assembled, reusable graspers, dissectors and scissors are available in a monopolar configuration.



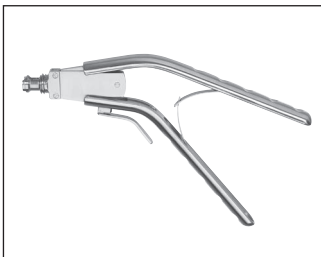
**Axial-Style Handle**



Catalog #	Type	Description
652106	Handle	Axial handle, spreading spring and ratchet



Catalog #	Type	Description
652107	Handle	Axial handle, spreading spring



Catalog #	Type	Description
652108	Handle	Axial angled handle, spreading spring and ratchet

**Ergonomic Ring Handle**



Catalog #	Type	Description
652110	Handle	Ergonomic ring handle with rotation, stepless ratchet, release key and HF connection

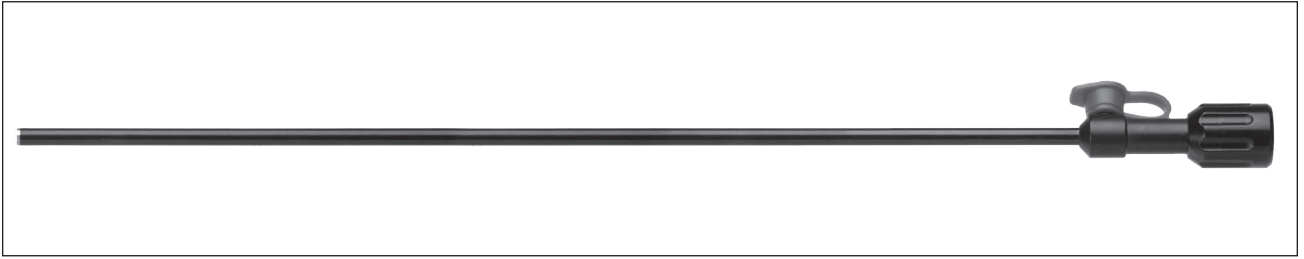


Catalog #	Type	Description
652112	Handle	Ergonomic ring handle with rotation and HF connection



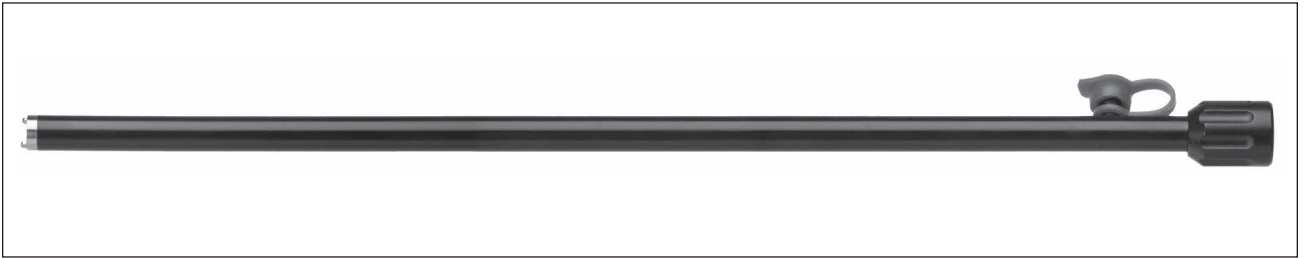
Catalog #	Type	Description
652113	Handle	Ergonomic ring handle with rotation, ratchet, push button release and HF connection

Shaft - 5mm

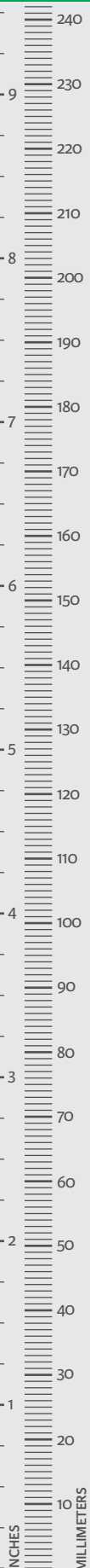


Catalog #	Type	Length	Diameter	Description
652501	Shaft	330mm	5	Tube shaft 5mm, insulated, with Luer lock
652503	Shaft	360mm	5	Tube shaft 5mm, insulated, with Luer lock
652505	Shaft	450mm	5	Tube shaft 5mm, insulated, with Luer lock

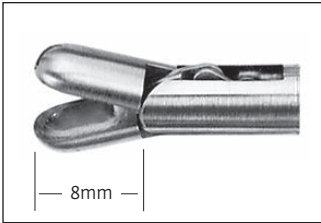
Shaft - 10mm



Catalog #	Type	Length	Diameter	Description
652601	Shaft	330mm	10	Tube shaft 10mm, insulated, cylindrical tip, with Luer Lock
652603	Shaft	360mm	10	Tube shaft 10mm, insulated, cylindrical tip, with Luer Lock
652605	Shaft	450mm	10	Tube shaft 10mm, insulated, cylindrical tip, with Luer Lock

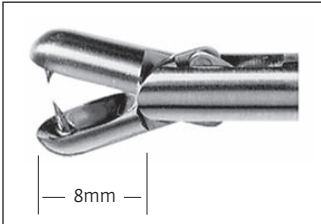


**Biopsy Cup - 5mm**



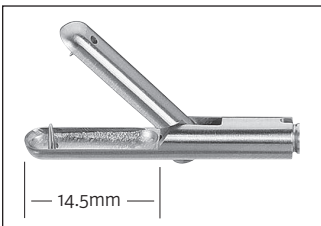
**Biopsy Cup, double action jaws**

Catalog #	Type	Length	Diameter
654100	Insert	330mm	5
655100	Insert	360mm	5
656100	Insert	450mm	5



**Biopsy Cup with thorn, double action jaws**

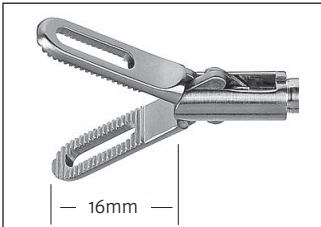
Catalog #	Type	Length	Diameter
654101	Insert	330mm	5
655101	Insert	360mm	5
656101	Insert	450mm	5



**Biopsy Cup long with thorn, single action jaws**

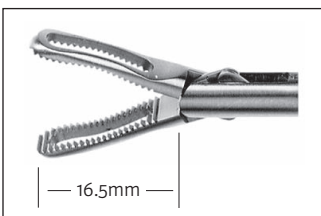
Catalog #	Type	Length	Diameter
654103	Insert	330mm	5
655103	Insert	360mm	5
656103	Insert	450mm	5

**Dissecting Forceps - 5mm**



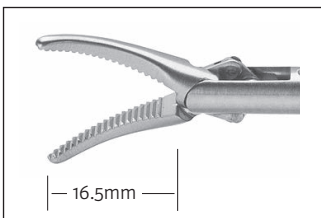
**Dissecting Forceps, fenestrated, double action jaws**

Catalog #	Type	Length	Diameter
654200	Insert	330mm	5
655200	Insert	360mm	5
656200	Insert	450mm	5



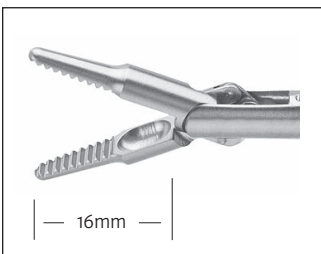
**Dissecting Forceps, fenestrated, double action jaws**

Catalog #	Type	Length	Diameter
654201	Insert	330mm	5
655201	Insert	360mm	5
656201	Insert	450mm	5



**Dissecting Forceps, tapered Maryland, double action jaws**

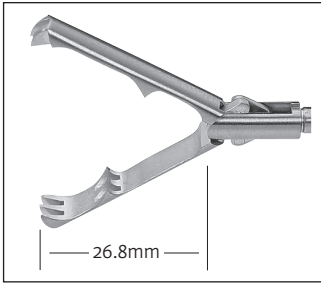
Catalog #	Type	Length	Diameter
654204	Insert	330mm	5
655204	Insert	360mm	5
656204	Insert	450mm	5



**Dissecting Forceps, tapered, double action jaws**

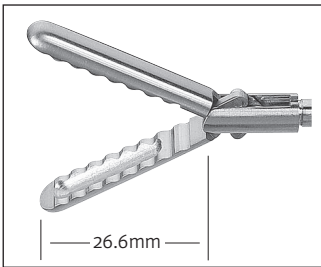
Catalog #	Type	Length	Diameter
654205	Insert	330mm	5
655205	Insert	360mm	5
656205	Insert	450mm	5

Grasping Forceps - 5mm



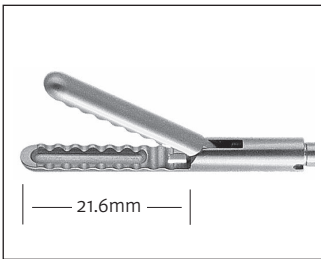
Aggressive claw grasping forceps, double action jaws

Catalog #	Type	Length	Diameter
654500	Insert	330mm	5
655500	Insert	360mm	5
656500	Insert	450mm	5



Atraumatic grasping forceps, with wavy teeth and reservoir, double action jaws

Catalog #	Type	Length	Diameter
654504	Insert	330mm	5
655504	Insert	360mm	5
656504	Insert	450mm	5



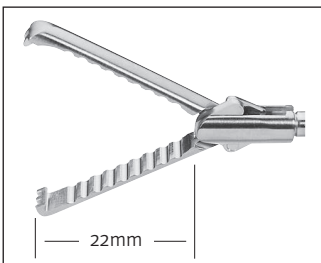
Atraumatic grasping forceps, with wavy teeth and reservoir, single action jaws

Catalog #	Type	Length	Diameter
654505	Insert	330mm	5
655505	Insert	360mm	5
656505	Insert	450mm	5



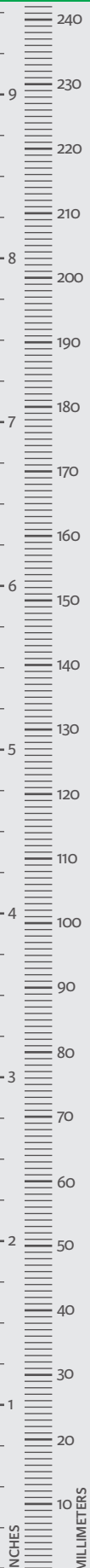
Claw grasping and extracting forceps, 2x3 teeth, single action jaws

Catalog #	Type	Length	Diameter
654508	Insert	330mm	5
655508	Insert	360mm	5
656508	Insert	450mm	5



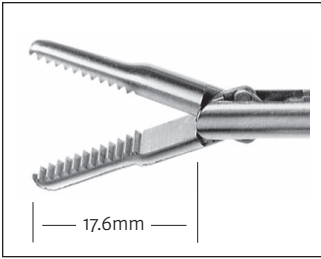
Claw grasping forceps for retraction, with wavy teeth, double action jaws

Catalog #	Type	Length	Diameter
654509	Insert	330mm	5
655509	Insert	360mm	5
656509	Insert	450mm	5



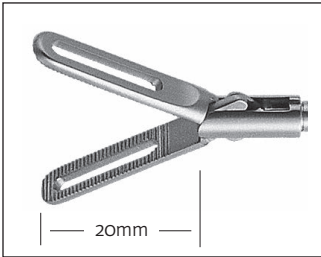


**Grasping Forceps - 5mm**



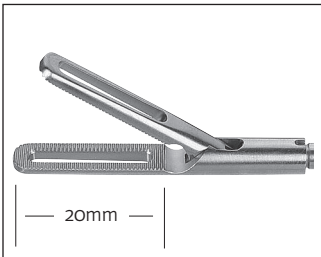
**Dolphin grasping forceps, double action jaws**

Catalog #	Type	Length	Diameter
654514	Insert	330mm	5
655514	Insert	360mm	5
656514	Insert	450mm	5



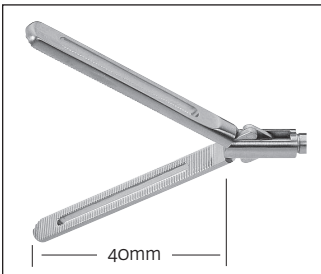
**Dorsey grasping forceps, fenestrated, double action jaws**

Catalog #	Type	Length	Diameter
654515	Insert	330mm	5
655515	Insert	360mm	5
656515	Insert	450mm	5



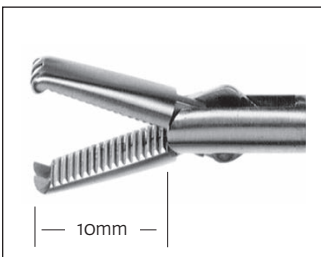
**Dorsey grasping forceps, fenestrated, single action jaws**

Catalog #	Type	Length	Diameter
654516	Insert	330mm	5
655516	Insert	360mm	5
656516	Insert	450mm	5



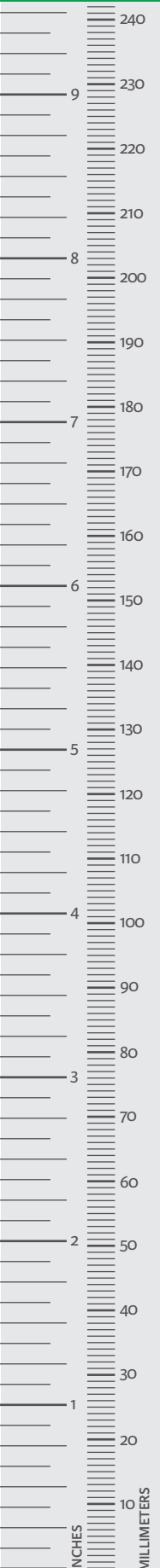
**Dorsey grasping forceps, fenestrated, double action jaws**

Catalog #	Type	Length	Diameter
654517	Insert	330mm	5
655517	Insert	360mm	5
656517	Insert	450mm	5

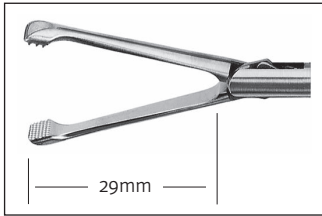


**Grasping forceps with 2x4 teeth, double action jaws**

Catalog #	Type	Length	Diameter
654522	Insert	330mm	5
655522	Insert	360mm	5
656522	Insert	450mm	5

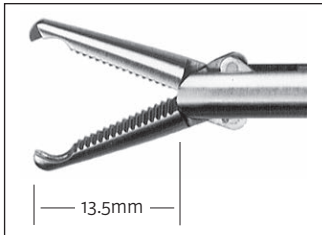


### Grasping Forceps - 5mm



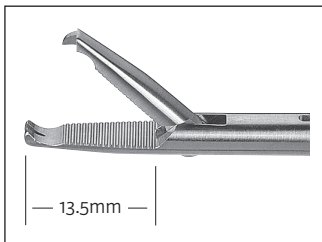
#### Grasping forceps with fine crosswise teeth, double action jaws

Catalog #	Type	Length	Diameter
654525	Insert	330mm	5
655525	Insert	360mm	5
656525	Insert	450mm	5



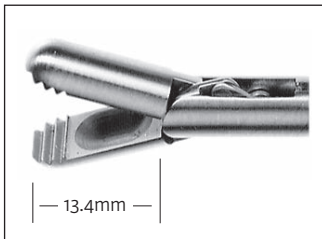
#### Grasping forceps with mouse teeth, double action jaws

Catalog #	Type	Length	Diameter
654526	Insert	330mm	5
655526	Insert	360mm	5
656526	Insert	450mm	5



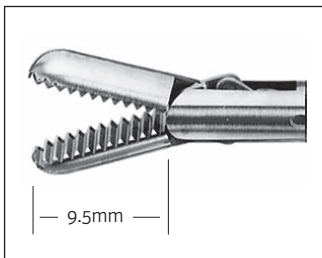
#### Grasping forceps with mouse teeth, single action jaws

Catalog #	Type	Length	Diameter
654527	Insert	330mm	5
655527	Insert	360mm	5
656527	Insert	450mm	5



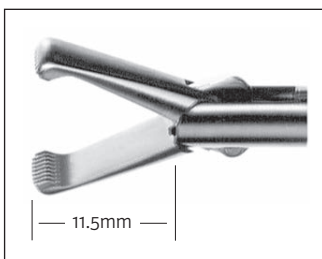
#### Grasping forceps with reservoir, blunt, double action jaws

Catalog #	Type	Length	Diameter
654528	Insert	330mm	5
655528	Insert	360mm	5
656528	Insert	450mm	5



#### Grasping forceps, double action jaws

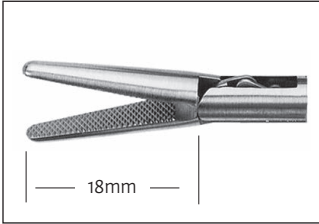
Catalog #	Type	Length	Diameter
654531	Insert	330mm	5
655531	Insert	360mm	5
656531	Insert	450mm	5



#### Grasping forceps, distal with a row of teeth, double action jaws

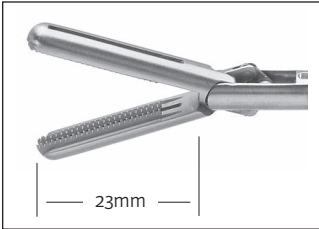
Catalog #	Type	Length	Diameter
654532	Insert	330mm	5
655532	Insert	360mm	5
656532	Insert	450mm	5

**Grasping Forceps - 5mm**



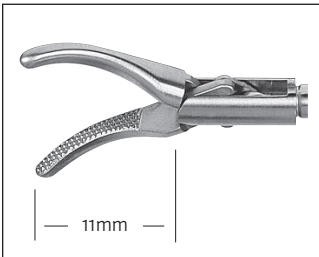
**Grasping forceps, sharp, crosswise teeth, double action jaws**

Catalog #	Type	Length	Diameter
654535	Insert	330mm	5
655535	Insert	360mm	5
656535	Insert	450mm	5



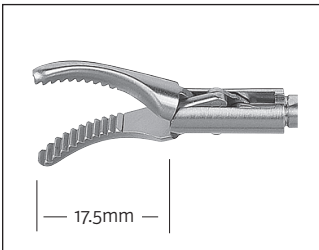
**Hunter Bowel Grasper, double action jaws**

Catalog #	Type	Length	Diameter
654539	Insert	330mm	5
655539	Insert	360mm	5
656539	Insert	450mm	5



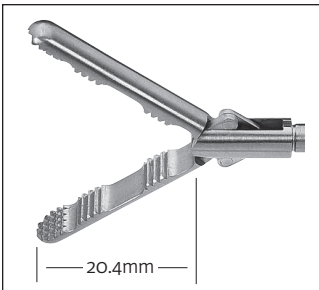
**Kelly grasping forceps, double action jaws**

Catalog #	Type	Length	Diameter
654540	Insert	330mm	5
655540	Insert	360mm	5
656540	Insert	450mm	5



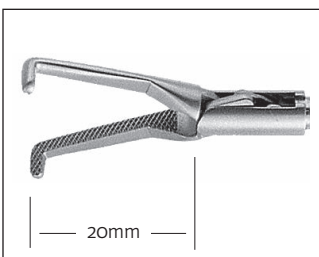
**Wave grasping forceps, fenestrated, double action**

Catalog #	Type	Length	Diameter
654541	Insert	330mm	5
655541	Insert	360mm	5
656541	Insert	450mm	5



**Maxigrip grasping forceps, double action jaws**

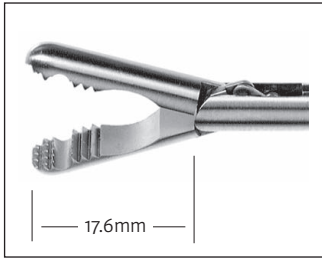
Catalog #	Type	Length	Diameter
654542	Insert	330mm	5
655542	Insert	360mm	5
656542	Insert	450mm	5



**Mixer grasping forceps, 90 degrees, double action jaws**

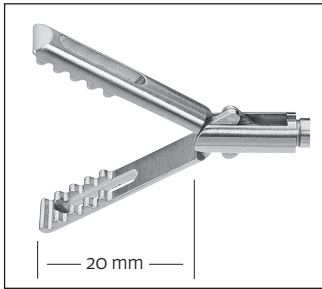
Catalog #	Type	Length	Diameter
654544	Insert	330mm	5
655544	Insert	360mm	5
656544	Insert	450mm	5

**Grasping Forceps - 5mm**



**Universal grasping forceps, double action jaws**

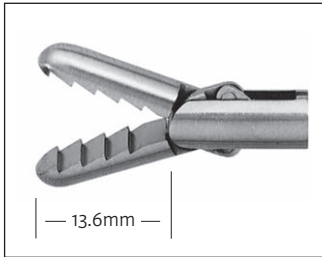
Catalog #	Type	Length	Diameter
654552	Insert	330mm	5
655552	Insert	360mm	5
656552	Insert	450mm	5



**Wave grasping forceps, fenestrated, double action jaws**

Catalog #	Type	Length	Diameter
654553	Insert	330mm	5
655553	Insert	360mm	5
656553	Insert	450mm	5

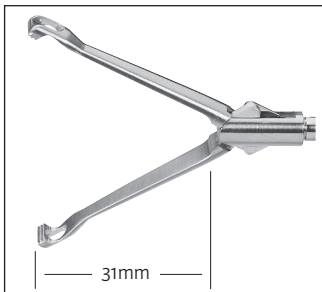
**Extracting Forceps - 5mm**



**Extracting forceps with a row of retrograde teeth, double action jaws**

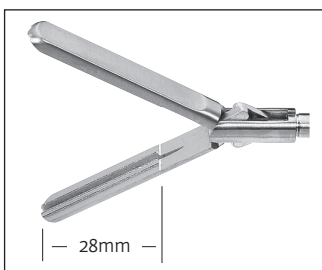
Catalog #	Type	Length	Diameter
654519	Insert	330mm	5
655519	Insert	360mm	5
656519	Insert	450mm	5

**Clamp - 5mm**



**Babcock clamp, double action jaws**

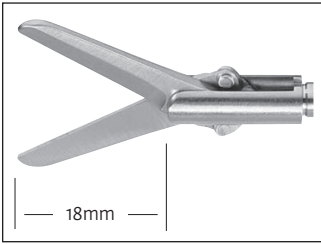
Catalog #	Type	Length	Diameter
654506	Insert	330mm	5
655506	Insert	360mm	5
656506	Insert	450mm	5



**DeBakey clamp, double action jaws**

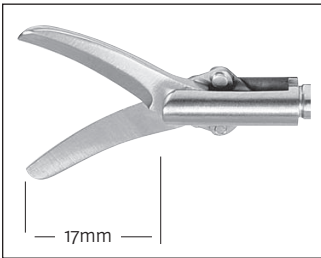
Catalog #	Type	Length	Diameter
654511	Insert	330mm	5
655511	Insert	360mm	5
656511	Insert	450mm	5

**Scissors - 5mm**



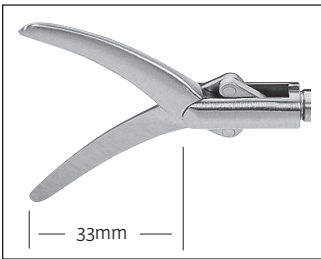
**Metzenbaum Preparation Scissors, straight, double action jaws**

Catalog #	Type	Length	Diameter
654700	Insert	330mm	5
655700	Insert	360mm	5
656700	Insert	450mm	5



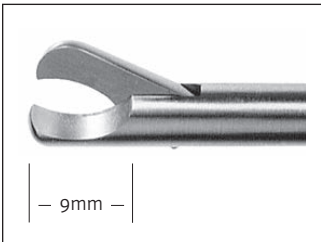
**Metzenbaum Preparation Scissors, curved, double action jaws**

Catalog #	Type	Length	Diameter
654701	Insert	330mm	5
655701	Insert	360mm	5
656701	Insert	450mm	5



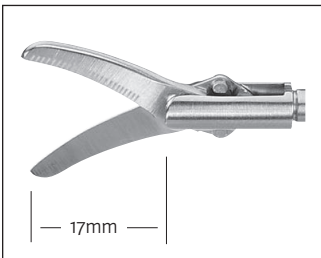
**Wondercut Preparation Scissors, curved, double action jaws**

Catalog #	Type	Length	Diameter
654702	Insert	330mm	5
655702	Insert	360mm	5
656702	Insert	450mm	5



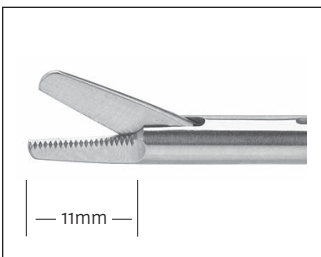
**Hook scissors, single action jaws**

Catalog #	Type	Length	Diameter
654704	Insert	330mm	5
655704	Insert	360mm	5
656704	Insert	450mm	5



**Metzenbaum Preparation Scissors, curved, strong version, serrated, double action jaws**

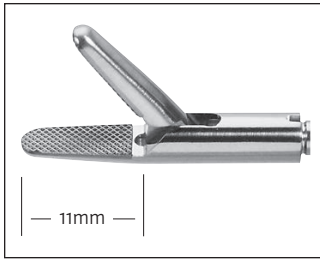
Catalog #	Type	Length	Diameter
654708	Insert	330mm	5
655708	Insert	360mm	5
656708	Insert	450mm	5



**Supercut scissors, straight, single action jaws**

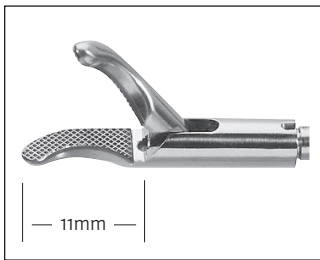
Catalog #	Type	Length	Diameter
654712	Insert	330mm	5
655712	Insert	360mm	5
656712	Insert	450mm	5

**Needle Holder - 5mm**



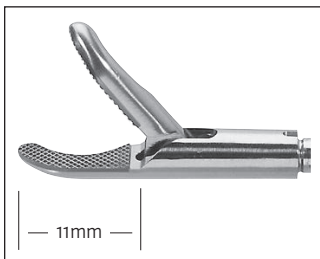
**Needle holder, straight, with inserted tungsten carbide, crosswise teeth, single action jaws**

Catalog #	Type	Length	Diameter
654900	Insert	330mm	5
655900	Insert	360mm	5
656900	Insert	450mm	5



**Needle holder, left curved, with inserted tungsten carbide, crosswise teeth, single action jaws**

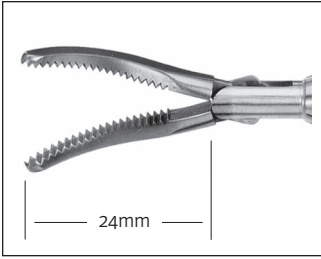
Catalog #	Type	Length	Diameter
654901	Insert	330mm	5
655901	Insert	360mm	5
656901	Insert	450mm	5



**Needle holder, right curved, with inserted tungsten carbide, crosswise teeth, single action jaws**

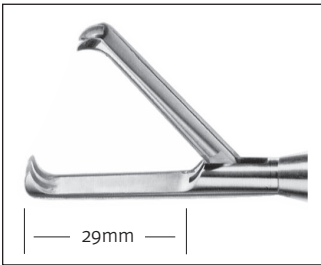
Catalog #	Type	Length	Diameter
654902	Insert	330mm	5
655902	Insert	360mm	5
656902	Insert	450mm	5

Grasping Forceps - 10mm



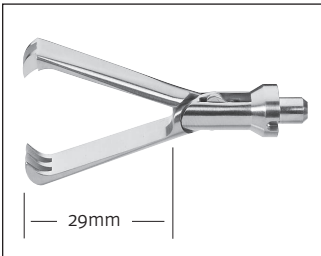
Maryland dissecting forceps, double action jaws

Catalog #	Type	Length	Diameter
654304	Insert	330mm	10
655304	Insert	360mm	10
656304	Insert	450mm	10



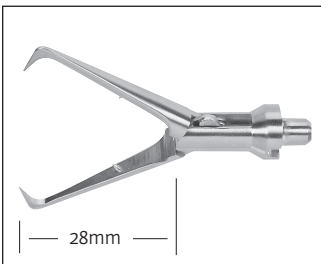
Claw Grasping forceps, 2x3 teeth, single action jaws

Catalog #	Type	Length	Diameter
654605	Insert	330mm	10
655605	Insert	360mm	10
656605	Insert	450mm	10



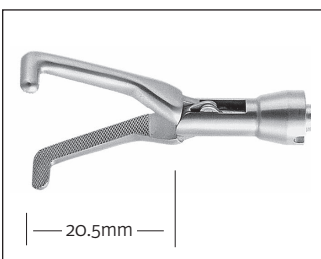
Claw Grasping forceps, 2x3 teeth, double action jaws

Catalog #	Type	Length	Diameter
654606	Insert	330mm	10
655606	Insert	360mm	10
656606	Insert	450mm	10



Tenaculum forceps, double action jaws

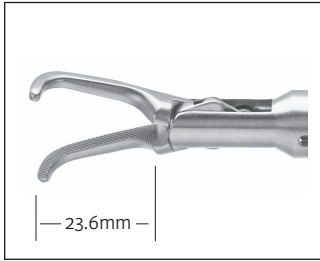
Catalog #	Type	Length	Diameter
654621	Insert	330mm	10
655621	Insert	360mm	10
656621	Insert	450mm	10



Mixer grasping forceps, double action jaws

Catalog #	Type	Length	Diameter
654622	Insert	330mm	10
655622	Insert	360mm	10
656622	Insert	450mm	10

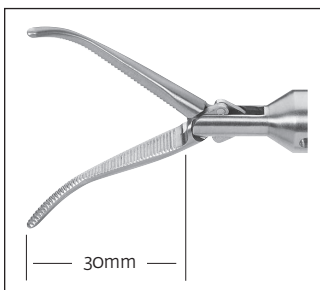
Dissecting Forceps - 10mm



Dissecting forceps, right angle, double action jaws

Catalog #	Type	Length	Diameter
654303	Insert	330mm	10
655303	Insert	360mm	10
656303	Insert	450mm	10

Clamp - 10mm



Overhold clamp with fine teeth, curved, double action jaws

Catalog #	Type	Length	Diameter
654623	Insert	330mm	10
655623	Insert	360mm	10
656623	Insert	450mm	10



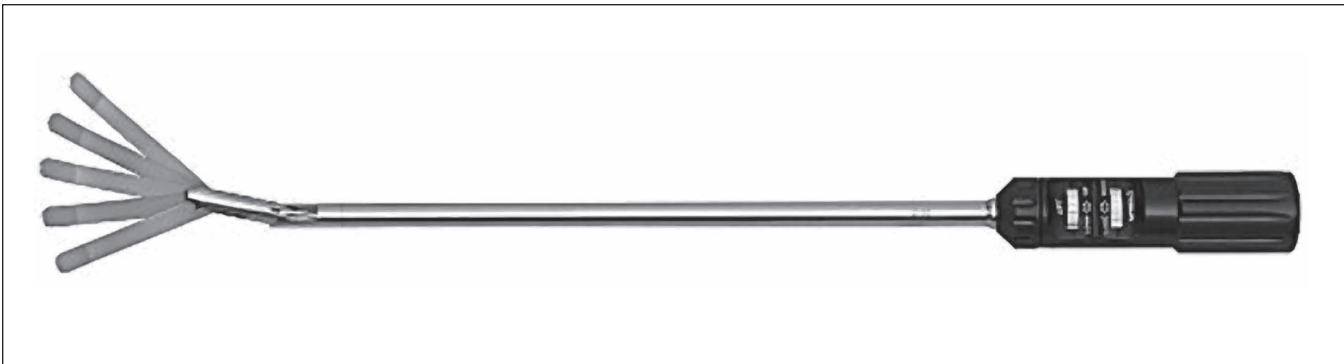
Fan Retractors



Catalog #	Type	Length	Diameter	Description
653101	Fan	330mm	5	Five fingers, 55mm spread articulating, 45° angleable, 42mm fan blade length
653103	Fan	360mm	5	Five fingers, 55mm spread articulating, 45° angleable, 42mm fan blade length
653105	Fan	450mm	5	Five fingers, 55mm spread articulating, 45° angleable, 42mm fan blade length



Catalog #	Type	Length	Diameter	Description
653201	Fan	330mm	10	Five fingers, 95mm spread articulating, 45° angleable, 72.5mm fan blade length
653203	Fan	360mm	10	Five fingers, 95mm spread articulating, 45° angleable, 72.5mm fan blade length
653205	Fan	450mm	10	Five fingers, 95mm spread articulating, 45° angleable, 72.5mm fan blade length



Catalog #	Type	Length	Diameter	Description
600-540	Fan	380mm	10	Five Finger Liver Elevator with up to 60° spread and 80° Lift Functions, 58mm fan blade length, in closed position

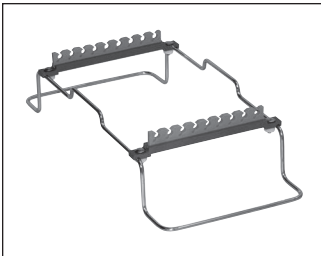
## Cleaning and Storage Accessories



### Full-Size (23" x 11") Containers

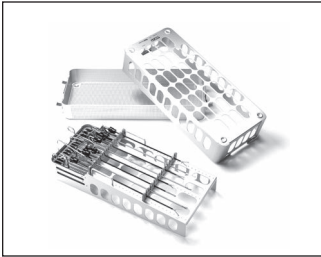
Height	Solid Bottom Full Container Catalog #	Solid Bottom Only Catalog #	Perforated Bottom Full Container Catalog #	Perforated Bottom Only Catalog #
6"	730-602	730-602B	730-612	730-612B
8"	730-603	730-603B	730-613	730-613B
10"	730-604	730-604B	730-614	730-614B

Commonly used with standard length instruments and the laparoscopic rack



### Instrument Rack

Catalog #	Description
790-010	Instrument rack with silicone instrument holders, space for up to 9 instruments



### Laparoscopic Case

Catalog #	Description
600-618	Length 57.9cm, 22¾" x 11" x 8" (579mm x 282mm x 203mm)

### Laparoscopic Bariatric Case

Catalog #	Description
600-620	Length 68.1cm, 26¾" x 11" x 8" (681mm x 282mm x 203mm)



### Endoscope and Instrument Holder

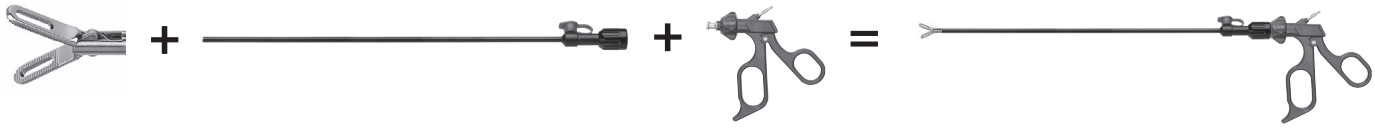
Catalog #	Description
620-800	Complete set includes the following components: <ul style="list-style-type: none"> <li>• Articulated arm with Endoscope &amp; Instrument Clamp 5/10mm (one piece), 85cm total length</li> <li>• Rail Clamping Base, double clamp (620-804)</li> </ul>

### Bariatric Endoscope and Instrument Holder

Catalog #	Description
620-805	Complete set includes the following components: <ul style="list-style-type: none"> <li>• Articulated arm with Endoscope &amp; Instrument Clamp 5/10mm (one piece), 100cm total length</li> <li>• Rail Clamping Base, double clamp (620-804)</li> </ul>

### Cleaning Brush

Catalog #	Type	Length	Description
643-100	For all shafts	425mm	Cleaning Brush



### Suggested Set for Laparoscopic Cholecystectomy

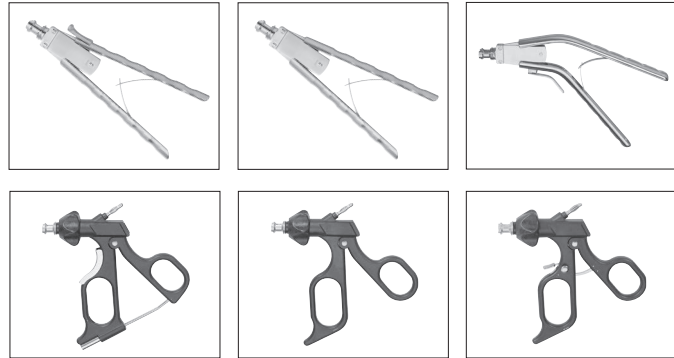
Qty	Insert Catalog #	Length	Diameter	Description
1	655504	360mm	5	Atraumatic grasping forceps, with wavy teeth and reservoir, double action jaws
1	655505	360mm	5	Atraumatic grasping forceps, with wavy teeth and reservoir, single action jaws
1	655552	360mm	5	Universal grasping forceps, double action jaws
1	655532	360mm	5	Grasping forceps, distal with a row of teeth, double action jaws
1	655515	360mm	5	Dorsey grasping forceps, fenestrated, double action jaws
1	655541	360mm	5	Maryland grasping forceps, double action jaws
1	655205	360mm	5	Dissecting forceps, tapered, double action jaws
1	655201	360mm	5	Dissecting forceps, fenestrated, double action jaws
1	655544	360mm	5	Mixer grasping forceps, 90 degrees, double action jaws
1	655508	360mm	5	Claw grasping and extracting forceps, 2+3 teeth, single action jaws
1	655704	360mm	5	Hook scissors, single action jaws
1	655708	360mm	5	Metzenbaum Preparation Scissors, curved, strong version, serrated, double action jaws

Qty	Shaft Catalog #	Length	Diameter	Description
12	652503	360mm	5	Tube shaft 5mm, insulated, with Luer lock

### Handle Selections

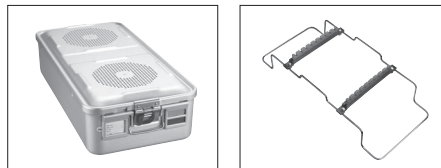
Catalog #	Description
652106	Axial handle, spreading spring and ratchet
652107	Axial handle, spreading spring
652108	Axial angled handle, spreading spring and ratchet
652110	Ergonomic ring handle with rotation, stepless ratchet, release key and HF connection
652112	Ergonomic ring handle with rotation and HF connection
652113	Ergonomic ring handle with rotation, ratchet, push button release and HF connection

Be sure to select as many handles as inserts/shafts



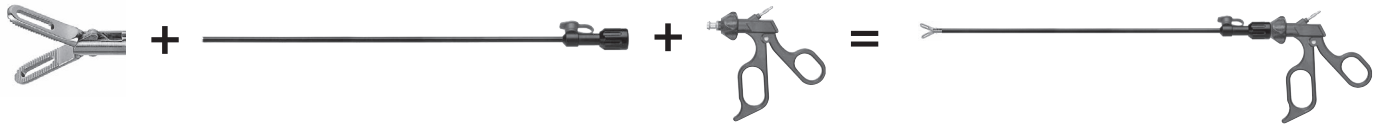
### Additional Suggested Instrumentation

Qty	Catalog #	Description
1	653101	Five fingers, 55mm spread articulating, 45° angleable, 42mm fan blade length
1	655901	Needle holder, left curved, with inserted tungsten carbide, crosswise teeth, single action jaws
2	625165LL	Rot-Lock Hunter, 5mm
1	600-287	Appel Knot Pusher, 5mm
1	600-317	Spatula Electrode, 5mm
1	600-318	L-Shape Hook Electrode, 5mm
1	600-138	Jarit Spoon Forceps, 10mm
1	600-520	Stone Eextractor
1	600-400	Cholangiogam Clamp w/Ratchet
1	600-410	Cholangiogram Guide



**730-603**  
Solid bottom,  
Full size container

**790-010**  
Instrument Rack



**Suggested Set for Laparoscopic Appendectomy**

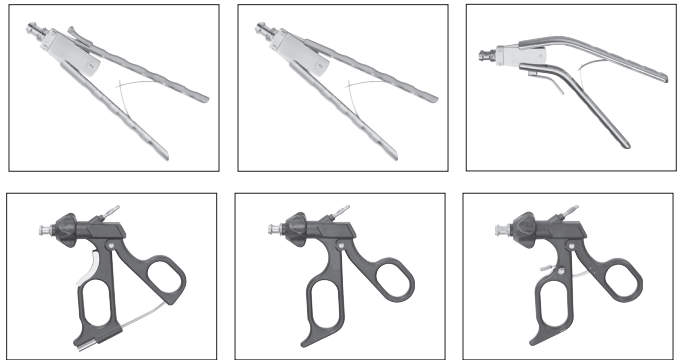
Qty	Insert Catalog #	Length	Diameter	Description
1	655504	360mm	5	Atraumatic grasping forceps, with wavy teeth and reservoir, double action jaws
1	655505	360mm	5	Atraumatic grasping forceps, with wavy teeth and reservoir, single action jaws
1	655515	360mm	5	Dorsey grasping forceps, fenestrated, double action jaws
1	655506	360mm	5	Babcock clamp, double action jaws
1	655541	360mm	5	Maryland grasping forceps, double action jaws
1	655205	360mm	5	Dissecting forceps, tapered, double action jaws
1	655544	360mm	5	Mixer grasping forceps, 90 degrees, double action jaws
1	655508	360mm	5	Claw grasping and extracting forceps, 2+3 teeth, single action jaws
1	655708	360mm	5	Metzenbaum Preparation Scissors, curved, strong version, serrated, double action jaws

Qty	Shaft Catalog #	Length	Diameter	Description
9	652503	360mm	5	Tube shaft 5mm, insulated, with Luer lock

**Handle Selections**

Catalog #	Description
652106	Axial handle, spreading spring and ratchet
652107	Axial handle, spreading spring
652108	Axial angled handle, spreading spring and ratchet
652110	Ergonomic ring handle with rotation, stepless ratchet, release key and HF connection
652112	Ergonomic ring handle with rotation and HF connection
652113	Ergonomic ring handle with rotation, ratchet, push button release and HF connection

Be sure to select as many handles as inserts/shafts

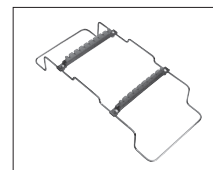


**Additional Suggested Instrumentation**

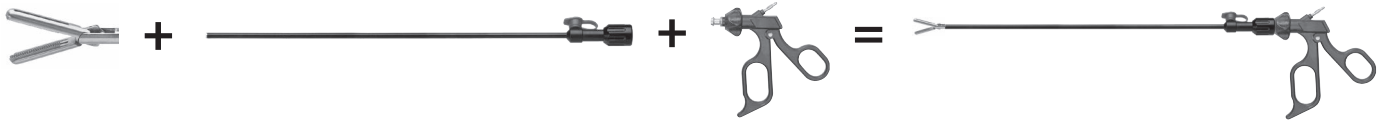
Qty	Catalog #	Description
1	653101	Five fingers, 55mm spread articulating, 45° angleable, 42mm fan blade length
1	655901	Needle holder, left curved, with inserted tungsten carbide, crosswise teeth, single action jaws
1	600-287	Appel Knot Pusher, 5mm
1	600-464	Reducer Sleeve, 5mm to 3mm
1	600-318	L-Shape Hook Electrode, 5mm
1	600-138	Jarit Spoon Forceps, 10mm



**730-603**  
Solid bottom,  
Full size container



**790-010**  
Instrument Rack



### Suggested Set for Laparoscopic Bariatric Procedure

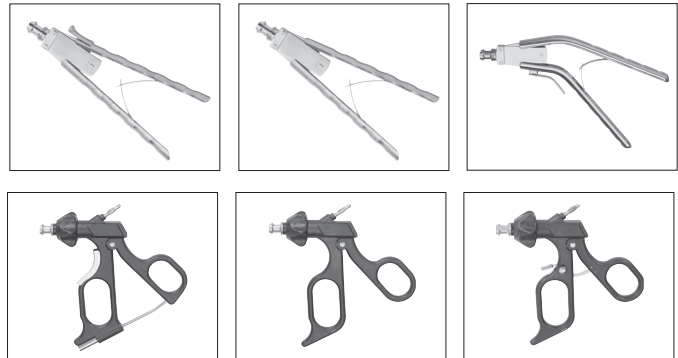
Qty	Insert Catalog #	Length	Diameter	Description
3	656504	450mm	5	Atraumatic grasping forceps, with wavy teeth and reservoir, double action jaws
1	656544	450mm	5	Mixer grasping forceps, 90 degrees, double action jaws
3	656539	450mm	5	Hunter Bowel Grasper, double action jaws
1	656541	450mm	5	Maryland grasping forceps, double action jaws

Qty	Shaft Catalog #	Length	Diameter	Description
8	652505	450mm	5	Tube shaft 5mm, insulated, with Luer lock

### Handle Selections

Catalog #	Description
652106	Axial handle, spreading spring and ratchet
652107	Axial handle, spreading spring
652108	Axial angled handle, spreading spring and ratchet
652110	Ergonomic ring handle with rotation, stepless ratchet, release key and HF connection
652112	Ergonomic ring handle with rotation and HF connection
652113	Ergonomic ring handle with rotation, ratchet, push button release and HF connection

Be sure to select as many handles as inserts/shafts

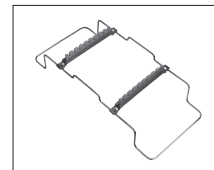


### Additional Suggested Instrumentation

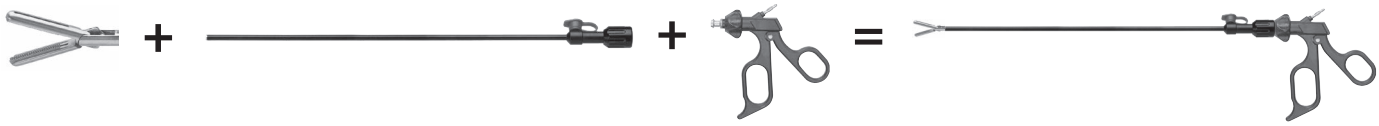
Qty	Catalog #	Description
1	653105	Five fingers, 55mm spread articulating, 45° angleable, 42mm fan blade length
1	656901	Needle holder, left curved, with inserted tungsten carbide, crosswise teeth, single action jaws
1	610-166	SL Roto-Lock Hunter, 5mm, 45mm jaw
1	625-103	Roto-Lock Strong, TC Grasper, 5mm



**730-603**  
Solid bottom,  
Full size container



**790-010**  
Instrument Rack



**Alternate Suggested Set for Laparoscopic Bariatric Procedure**

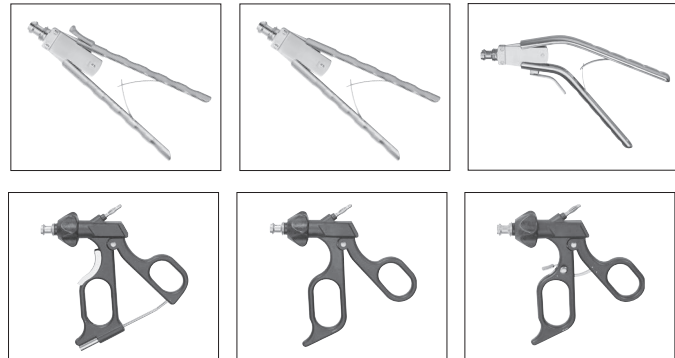
Qty	Insert Catalog #	Length	Diameter	Description
1	656704	450mm	5	Hook scissors, single action jaws
1	656509	450mm	5	Claw grasping forceps for retraction, with wavy teeth, double action jaws
1	656541	450mm	5	Maryland grasping forceps, double action jaws
2	656539	450mm	5	Hunter Bowel Grasper, double action jaws
1	656702	450mm	5	Wondercut Preparation Scissors, curved, double action jaws
1	656102	450mm	5	Biopsy cup long, single action jaws

Qty	Shaft Catalog #	Length	Diameter	Description
7	652505	450mm	5	Tube shaft 5mm, insulated, with Luer lock

**Handle Selections**

Catalog #	Description
652106	Axial handle, spreading spring and ratchet
652107	Axial handle, spreading spring
652108	Axial angled handle, spreading spring and ratchet
652110	Ergonomic ring handle with rotation, stepless ratchet, release key and HF connection
652112	Ergonomic ring handle with rotation and HF connection
652113	Ergonomic ring handle with rotation, ratchet, push button release and HF connection

Be sure to select as many handles as inserts/shafts

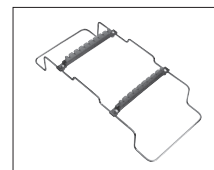


**Additional Suggested Instrumentation**

Qty	Catalog #	Description
1	653105	Five fingers, 55mm spread articulating, 45° angleable, 42mm fan blade length
1	656901	Needle holder, left curved, with inserted tungsten carbide, crosswise teeth, single action jaws
2	625165LL	Roto-Lock Hunter, 5mm
1	625154	Anvil Grasping Forceps, Roto-Lock
1	600-266	Romeo Self-Righting Needle Holder, 5mm
1	600-584	Articular Esophagus Retractor, 10mm
1	600-254	In-Line Carb-Bite Needle Holder, Left Curve



**730-603**  
Solid bottom,  
Full size container



**790-010**  
Instrument Rack







## Guarantee/Warranty

INTEGRA LIFESCIENCES CORPORATION ("INTEGRA") warrants to the original purchaser only that each new INTEGRA product is free from manufacturing defects in material and workmanship under normal use and service for a period of two (2) years (except as otherwise expressly provided as to accessory items) from the date of delivery by INTEGRA to the first purchaser, but in no event beyond the expiration date stated on any product labeling.

All instruments sold by Integra Jarit are warranted only to the original purchaser and only against defects in workmanship or materials which under the intended use render such instruments inoperable.

All Integra Jarit Carb-Bite instruments are further warranted for a period of three (3) years under normal use. Should any adjustment become necessary during this warranty period, Carb-Bite Needle Holder jaw inserts will be replaced without charge.

All Integra Jarit Supercut Scissors are further warranted for a period of one year under normal use. Should any sharpening become necessary during this warranty period, Integra Jarit will provide this service without charge. A nominal charge will be made for sharpening after expiration of this warranty. Integra Jarit Supercut Scissors will be date-stamped for control.

This Guarantee/Warranty shall be void in the event any Integra Jarit instrument is used for purposes other than as originally intended, is not maintained or cleaned properly, is damaged as a result of misuse or accident or is repaired or altered by unauthorized persons.

The above is a limited warranty, and it is the only warranty made by Integra Jarit. Integra Jarit makes no other warranty, express or implied, including any warranty of merchantability or fitness for a particular purpose, as well as any express or implied warranty to patients. Integra Jarit shall have no liability for consequential, exemplary or incidental damages even if it is aware of the possibility of such damages. No warranty or guarantee may be created by any act or statement nor may this warranty be modified in any way, except as a result of a writing signed by an officer of Jarit. These limitations on the creation or modification of this warranty may not be waived or modified orally or by any conduct. The stated express warranty is in lieu of all liabilities or obligations of Integra Jarit arising out of, or in connection with, the delivery, use or performance of any Integra Jarit instrument. Integra Jarit neither assumes nor authorizes any representative or other person to assume for it any other liability in connection with Integra Jarit's products.

All products are subject to slight changes in dimensions and finishes due to changes in manufacturing standards.

### Ordering Procedure

A written purchase order on customer's form may be requested for purchase of Integra products.

### Acceptance of Order

Orders are accepted upon approval by Integra.

### Returned Goods Policy

Products must be returned in unopened packages with manufacturer's seals intact to be accepted for replacement or credit unless returned due to a complaint of product defect. Determination of a product defect will be made by Integra. Products will not be accepted for replacement if they have been in the possession of the customer for more than 90 days.

### Repairs and Maintenance

Should your instruments require repair or maintenance, contact Integra for return authorization and address. Instruments returned to Integra for repair must have a statement testifying that each instrument has been thoroughly cleaned and sterilized. Failure to supply evidence of cleaning and disinfection will result in a cleaning charge and delayed processing of your instrument repair.

### Product Information Disclosure

Integra and its subsidiaries ("Integra") and manufacturer exclude all warranties, except Integra's applicable standard warranty whether expressed or implied, including but not limited to, any implied warranties of merchantability or fitness for a particular purpose. Neither Integra nor manufacturer shall be liable for any incidental or consequential loss, damage, or expense, directly or indirectly arising from use of these products. Neither Integra nor manufacturer assume nor authorize any person to assume for them any other or additional liability or responsibility in connection with these products.

### Care and Handling/IFU

For Care and Handling information and Instructions for use, please visit [integralife.com/jarit](http://integralife.com/jarit).

Manufacturer:



**Integra LifeSciences Production Corporation**  
11 Cabot Boulevard  
Mansfield, MA 02048 USA



Availability of these products might vary from a given country or region to another, as a result of specific local regulatory approval or clearance requirements for sale in such country or region.

- Non contractual document. The manufacturer reserves the right, without prior notice, to modify the products in order to improve their quality.
- Warning: Applicable laws restrict these products to sale by or on the order of a physician.
- Consult product labels and inserts for any indication, contraindications, hazards, warnings, precautions, and instructions for use.

---

### For more information or to place an order, please contact:

#### United States, Canada, Asia, Pacific, Latin America

USA 800-654-2873 ■ 888-980-7742 fax

International +1 609-936-5400 ■ +1 609-750-4259 fax

[integralife.com](http://integralife.com)

Manufacturer:



**Integra LifeSciences Production Corporation**

11 Cabot Boulevard

Mansfield, MA 02048 USA