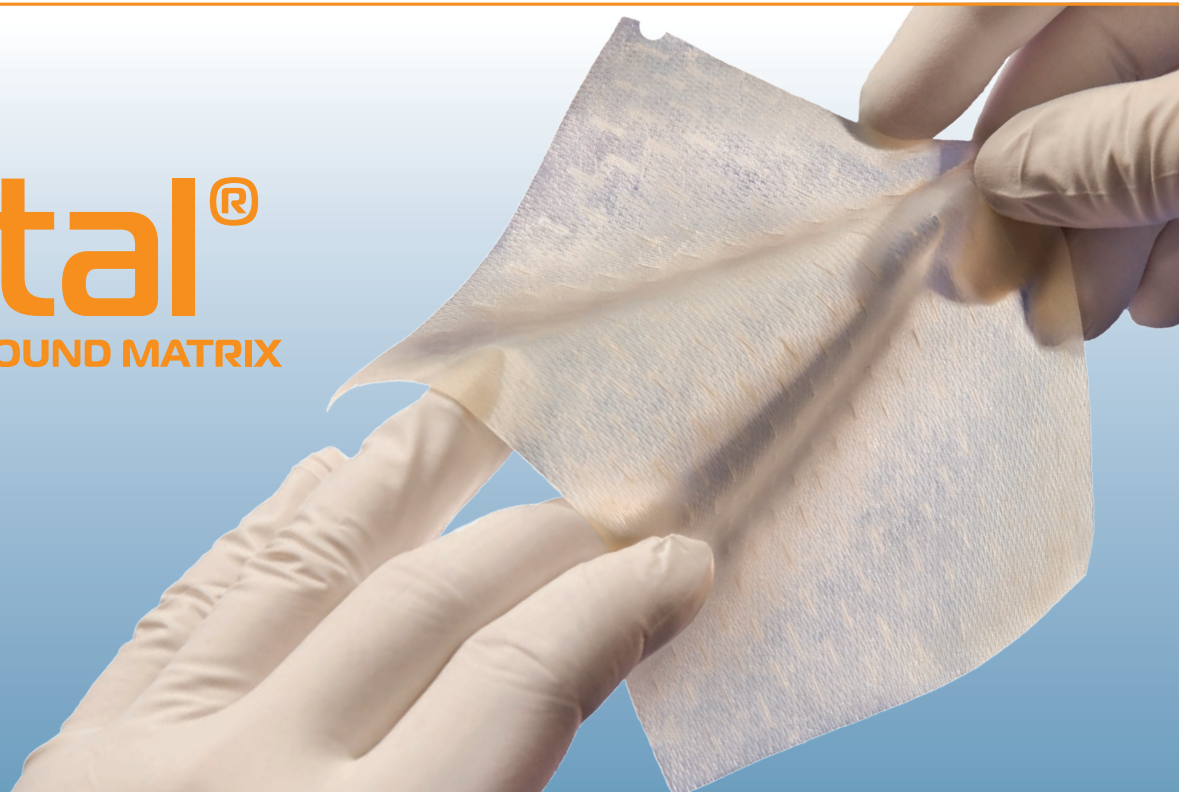


Cytal[®]

WOUND MATRIX



Facilitates Remodeling

- Promotes neovascularization and cellular infiltration¹
- Results in site-appropriate tissue deposition¹⁻³

Designed for Complex Wounds:

- Pre-fenestrated to support effective fluid management and wound drainage
- Highly conformable in irregular wound beds
- Multiple layering configurations allow for tailored wound management
- Versatility accommodates a variety of dressing protocols

Positive Outcomes Published in Multiple Peer-reviewed Articles:

- Positive clinical outcomes shown in traumatic wounds, chronic wounds, burns, and pressure injuries⁴⁻⁶

Traumatic Wounds

Surgical Wounds

Tunneling Wounds

Chronic Wounds

Pressure Injuries

1. Brown BN, Londono R, Tottey S, Zhang L, Kukla KA, Wolf MT, Daly KA, Reing JE, Badylak SF[¶]. Macrophage phenotype as a predictor of constructive remodeling following the implantation of biologically derived surgical mesh materials. *Acta Biomaterialia*. 2012; 8:978-987.

2. Riganti JM, Ciotola F, Amenabar A, Craiem D, Graf S, Badaloni A, Gilbert TW[¶], Nieponice AI. Urinary bladder matrix scaffolds strengthen esophageal hiatus repair. *Journal of Surgical Research*. 2016; 204:344-50.

3. Young DA#, Jackson N, Ronaghan CA[¶], Brathwaite CEM[¶], Gilbert TW[¶]. Retrorectus repair of incisional ventral hernia with urinary bladder matrix reinforcement in a long-term porcine model. *Regenerative Medicine*. 2018; doi:10.2217/rme-2018-0023.

4. Sasse KC[¶], Ackerman EM, Brandt JR. Complex wounds treated with Matristem xenograft material: Case series and cost analysis. *OA Surgery*. 2013; 1.

5. Lanier ST, Ruter DI, Valerio IL. Regenerative medicine for soft tissue coverage of the hand and upper extremity. *Current Orthopaedic Practice*. 2017; 29(2): 120-126.

6. Kimmel H, Rahn M, Gilbert TW[¶]. The clinical effectiveness in wound healing with extracellular matrix derived from porcine urinary bladder matrix: A case series on severe chronic wounds. *The Journal of the American College of Certified Wound Specialists*. 2010; 2:55-59.

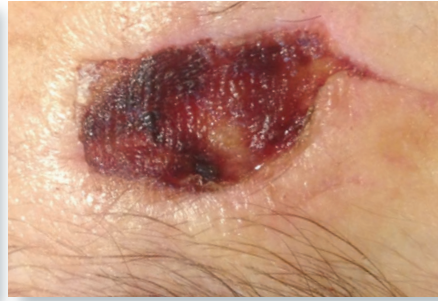
[¶] Consultant | # ACell Employee | ▯ ACell Sponsored Research Agreement

Clinical Cases

Use of Cytal® Wound Matrix following facial MOH's resection



Cytal Wound Matrix 1-Layer is applied to the wound.



Seven days post application. Cytal Wound Matrix 1-Layer reapplied.



35 days post initial application with complete wound closure.

Chronic full-thickness wound to the medial aspect of the ankle following a traumatic accident



Wound presentation following debridement. Cytal Wound Matrix 6-Layer and MicroMatrix® applied.



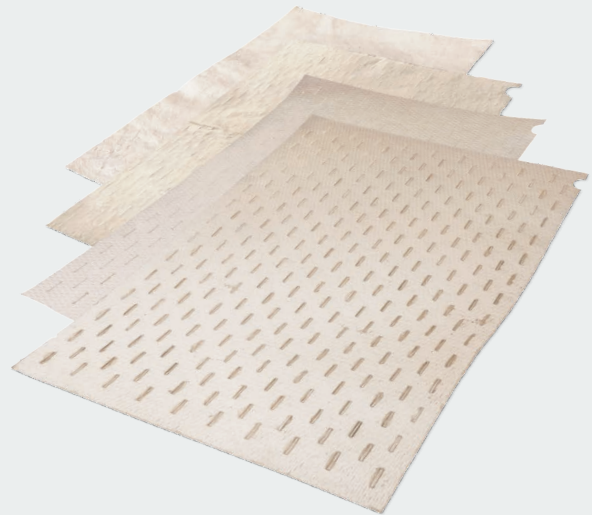
Five weeks post-application. Reduction of wound bed size is observed.



Complete wound closure at ten weeks.

Ordering Information

Product Name	Catalog Number	Size
Cytal Wound Matrix 1-Layer	WS0303	3 x 3.5 cm
Cytal Wound Matrix 1-Layer	WS0307	3 x 7 cm
Cytal Wound Matrix 1-Layer	WS0710	7 x 10 cm
Cytal Wound Matrix 1-Layer	WS1015	10 x 15 cm
Cytal Wound Matrix 2-Layer	WSM0505	5 x 5 cm
Cytal Wound Matrix 2-Layer	WSM0710	7 x 10 cm
Cytal Wound Matrix 2-Layer	WSM1015	10 x 15 cm
Cytal Wound Matrix 3-Layer	WSR0505	5 x 5 cm
Cytal Wound Matrix 3-Layer	WSR0710	7 x 10 cm
Cytal Wound Matrix 3-Layer	WSR1015	10 x 15 cm
Cytal Wound Matrix 3-Layer	WSR1625	16 x 25 cm
Cytal Wound Matrix 3-Layer	WSR1635	16 x 35 cm
Cytal Wound Matrix 6-Layer	WSX0505	5 x 5 cm
Cytal Wound Matrix 6-Layer	WSX0710	7 x 10 cm
Cytal Wound Matrix 6-Layer	WSX1015	10 x 15 cm



To order Cytal Wound Matrix devices or for more information:  orders@acell.com  800-826-2926