

## Post Procedural Data

### POST PROCEDURAL DATA

Date

Pressure Setting

Doctor Notes

### POST PROCEDURAL DATA

Date

Pressure Setting

Doctor Notes

### POST PROCEDURAL DATA

Date

Pressure Setting

Doctor Notes

#### Indications

The CERTAS Plus Programmable Valve is an implantable device that provides constant intraventricular pressure and drainage of CSF for the management of hydrocephalus.

#### Contraindications

These devices are contraindicated in patients receiving anticoagulants or known to have bleeding diathesis. Avoid shunt implantation if infection is present within the body. Delay the shunt procedure when infections such as meningitis, ventriculitis, peritonitis, bacteremia, and septicemia are present. The BACTISEAL Catheters are contraindicated in patients with known hypersensitivity to rifampin or clindamycin hydrochloride.

#### Codman CERTAS® Tool Kit

##### Indications

The Codman CERTAS® Tool Kit allows the noninvasive reading or adjustment of the valve setting.

##### Contraindications

These devices are contraindicated in patients receiving anticoagulants or known to have a bleeding diathesis. Avoid shunt implantation if infection is present within the body. Delay the shunt procedure when infections such as meningitis, ventriculitis, peritonitis, bacteremia, and septicemia are present. The BACTISEAL Catheters are contraindicated in patients with known hypersensitivity to rifampin or clindamycin hydrochloride.

#### Codman® CERTAS™ Plus Electronic Tool Kit

##### Indications


The CERTAS Plus Electronic Tool Kit allows the non-invasive reading or adjustment of the valve setting for the CERTAS and CERTAS Plus Programmable Valves.

##### Contraindications

This device is not designed, sold, or intended for use except as indicated.

#### For more information or to place an order, please contact:

Sales & Marketing EMEA  
Integra LifeSciences Services (France) SAS  
Immeuble Séquoia 2 97 allée A. Borodine  
Parc technologique de la Porte des Alpes  
69800 Saint Priest - FRANCE  
Phone: +33 (0)4 37 47 59 00  
Fax: +33 (0)4 37 47 59 99

 Integra LifeSciences Switzerland Sarl  
Rue Girardet 29 (2nd Floor)  
Le Locle ■ Neuchâtel CH-2400 ■  
Switzerland

Codman and Codman Certas are registered trademarks of Integra LifeSciences Corporation or its subsidiaries in the United States and/or other countries.

©2020 Integra LifeSciences Corporation. All rights reserved. Last revision date: 05/2020.  
1049114-3-EN



## + MEDICAL INFORMATION

# Patient I.D. Card

Codman®  
**CERTAS™ Plus**  
Programmable Valve

In case of medical emergency  
or medical treatment,  
please show this **Patient I.D. Card**.

## Important

## Stickers

The holder of this Patient Identification Card has a hydrocephalus shunt system implanted for the drainage of cerebrospinal fluid.

In case of lethargy, sleepiness, confusion, fainting, vertigo, epileptic seizure, neck stiffness, fever of unknown origin, damage to the operative sutures, bruising or skin injuries around the operative site, or exposed shunt components, **contact your doctor or hospital immediately.**

## Patient Data

### PATIENT DATA

First Name

Last Name

Date of Birth

City

Street

Country

Phone

### EMERGENCY CONTACT

First Name

Last Name

Phone

## Implantation Information

### IMPLANT

Implant date

Implanting hospital

Hospital phone

Doctor name

Doctor phone

Medical condition

### VALVE PLACEMENT

Frontal

Occipital

## Product Information

### PROGRAMMABLE VALVE

The Codman® CERTAS™ Plus is a programmable valve with 8 pressure settings.

Product Code

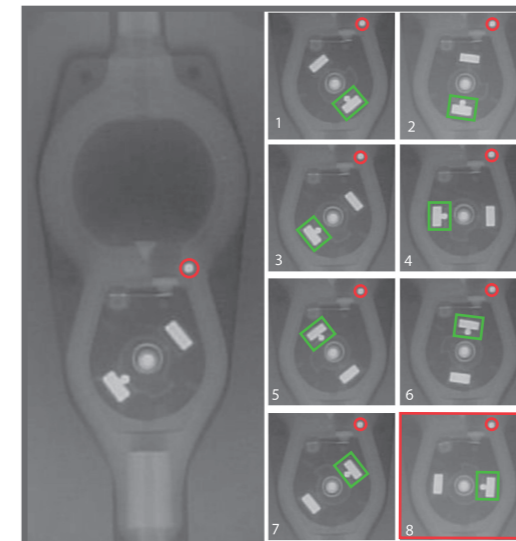
Lot Number

Design Standard  Small Design  Right angle Design

### WARNING

- Use only the Codman Certas® Tool Kit or the Codman® CERTAS™ Plus electronic Tool Kit to adjust and indicate the setting of the Codman Certas® Plus programmable valve.
- Testing shows that the valve mechanism is resistant to unintended changes in the setting in a 3 Tesla MRI. However, the clinician should confirm the valve setting after a magnetic resonance imaging (MRI) procedure.
- The valve setting is adjusted with the application and manipulation of strong magnets. A change to the valve setting is unlikely to occur under normal circumstances. However, magnetic fields should not be placed in close proximity to the valve due to the possibility of an unintentional setting change.
- If these or other symptoms occur contact your Doctor immediately: headaches, vomiting, drowsiness, weakness, irritability or altered mental state.

## Product Information



○ Right Hand Side (RHS)  
X-Ray Marker

□ Setting indicator

## Post Procedural Data

### POST PROCEDURAL DATA

Date

Pressure Setting

Doctor Notes

### POST PROCEDURAL DATA

Date

Pressure Setting

Doctor Notes

### POST PROCEDURAL DATA

Date

Pressure Setting

Doctor Notes